

### 3D Soil Hydraulic Database of Europe at 250 m resolution

Brigitta Tóth<sup>a,b</sup>, toth.brigitta@agr.ar.mta.hu

Melanie Weynants<sup>c</sup>, melanie.weynants@jrc.ec.europa.eu

László Pásztor<sup>a</sup>, pasztor.laszlo@agr.ar.mta.hu

Tomislav Hengl<sup>d</sup>, tom.hengl@wur.nl

<sup>a</sup>Institute for Soil Science and Agricultural Chemistry, Centre for Agricultural Research, Hungarian Academy of Sciences, Herman Ottó út 15., Budapest, Hungary, H-1022

<sup>b</sup>Department of Crop Production and Soil Science, Georgikon Faculty, University of Pannonia, Deák F. u. 16, Keszthely, Hungary, H-8360

<sup>c</sup>European Commission Joint Research Centre, Via Enrico Fermi 2749, I-21027 Ispra (VA) - Italy

<sup>d</sup>ISRIC - World Soil Information, P.O. Box 353, 6700 AJ Wageningen, The Netherlands

Corresponding author: Brigitta Tóth, +36706845990.

This article has been accepted for publication and undergone full peer review but has not been through the copyediting, typesetting, pagination and proofreading process which may lead to differences between this version and the Version of Record. Please cite this article as doi: 10.1002/hyp.11203

## Abstract

Soil hydraulic properties are required in various modelling schemes. We propose a consistent spatial soil hydraulic database at 7 soil depths up to 2 m calculated for Europe based on SoilGrids250m and 1km datasets and pedotransfer functions trained on the European Hydropedological Data Inventory (EU-HYDI). Saturated water content, water content at field capacity and wilting point, saturated hydraulic conductivity and Mualem-van Genuchten parameters for the description of the moisture retention and unsaturated hydraulic conductivity curves have been predicted. The derived 3D soil hydraulic layers (EU-SoilHydroGrids ver1.0) can be used for environmental modelling purposes at catchment or continental scale in Europe. Currently only EU-SoilHydroGrids provides information on the most frequently required soil hydraulic properties with full European coverage up to 2 m depth.

**Keywords:** 3D European soil hydraulic maps; Mualem-van Genuchten parameters; soil water retention; soil hydraulic conductivity; multilayered gridded information; EU-SoilHydroGrids

## 1. Data

Multilayered European Soil Hydraulic Database (EU-SoilHydroGrids ver1.0) was derived with European pedotransfer functions (EU-PTFs) (Tóth *et al.*, 2015) based on the soil information of SoilGrids250m and aggregated 1km (Hengl *et al.*, 2017) datasets.

The European PTFs (Tóth *et al.*, 2015) were trained on the European Hydropedological Dataset (EU-HYDI dataset) (Weynants *et al.*, 2013). EU-HYDI is a collection of data from 29 institutions in 18 European countries and contains data on taxonomical, chemical and physical soil properties of more than 18000 soil samples. Pedotransfer functions were

calibrated using soil information of 134 to 6074 soil samples and validated on 57 to 2357 samples, depending on the type of soil hydraulic property (Tóth *et al.*, 2015).

SoilGrids provides the most detailed information on soil properties with full continental coverage in Europe. It incorporates soil taxonomical, physical and chemical data of seven soil depths at 250 m resolution (Hengl *et al.*, 2017). We used the following soil properties to calculate the soil hydraulic properties: clay, silt and sand content (mass %), organic carbon content ( $\text{g kg}^{-1}$ ), bulk density ( $\text{kg m}^{-3}$ ), pH in water and depth to bedrock (cm) at 0, 5, 15, 30, 60, 100 and 200 cm depth. The first four depths, which are less than or equal to 30 cm depth, are considered as topsoil and the remaining handled as subsoil in accordance with the EU-PTFs used for calculations (Tóth *et al.*, 2015).

In case bedrock appears within 200 cm, hydraulic properties were calculated up to the first layer underlying the top of the bedrock providing possibility to interpolate the soil hydraulic properties through different soil depths. For modelling purposes the predicted depth to bedrock is available from [www.soilgrids.org](http://www.soilgrids.org), data is described in detail in Shangguan *et al.* (2017).

## **2. Methods**

Soil properties included in SoilGrids database were transformed into the format needed by the EU-PTFs (Tóth *et al.*, 2015). Sand, silt and clay content were adjusted to sum up to 100% and USDA texture classes (Soil Survey Staff, 1975) were calculated. We selected the best performing and most reliable PTFs that were calibrated on representative data subsets to exclude too much data specific models. Sixteen soil hydraulic properties were calculated for the seven standard depths of SoilGrids: 0, 5, 15, 30, 60, 100 and 200 cm at both 250 m and 1 km resolutions. Given the non-linear relations between soil hydraulic properties and the other soil properties used as predictors, the mean of a set of predicted hydraulic properties is not

equal to the prediction of the property based on the mean of the predictors. Therefore calculations were also completed on the aggregated SoilGrids1km rather than aggregate soil hydraulic layers derived on 250 m resolution. The 1 km resolution aggregated version of the SoilGrids250m maps were generated using the ‘average’ resampling method in the GDAL software (Mitchell et al., 2014).

Table 1. lists the calculated soil hydraulic properties and the EU-PTFs used to predict them, indicating also the soil properties used as predictors. Saturated water content (THS) refers to the water content at 0 cm matric potential (pF0). Field capacity (FC) is the water content at –330 cm matric potential (–0.03 MPa), which is the most commonly used value (pF2.5). If terminology of FC is different from the above mentioned - e.g. it is assumed as water content at –50, –60, or –100 cm matric potential (–0.005, –0.006 or –0.01 MPa) - it can be calculated from the moisture retention curve (MRC). Wilting point (WP) is calculated as water content at –15848 cm matric potential (–1.5 MPa) (pF4.2). Saturated hydraulic conductivity (KS) is the conductivity at 0 matric potential (0 MPa).

The van Genuchten model (van Genuchten, 1980) is used for the description of the MRC:

$$\theta(h) = \theta_r + \frac{\theta_s - \theta_r}{[1 + (\alpha h)^n]^m}, \quad (\text{Eq. 1.})$$

where  $\theta(h)$  is the water content of the soil ( $\text{cm}^3 \text{cm}^{-3}$ ) at a given matric potential value (cm of water column);  $\theta_r$  is the residual water content ( $\text{cm}^3 \text{cm}^{-3}$ );  $\theta_s$  is the saturated water content ( $\text{cm}^3 \text{cm}^{-3}$ ); and  $\alpha$  ( $\text{cm}^{-1}$ ),  $n$  (-), and  $m$  (-) are fitting parameters. Parameter  $m$  equals to  $1 - 1/n$ .

Parameters  $\theta_r$ ,  $\theta_s$ ,  $\alpha$ ,  $n$ ,  $m$  of the van Genuchten model were calculated and included in EU-SoilHydroGrids ver1.0.

The hydraulic conductivity curve (HCC) is described with the van Genuchten model coupled with the model of Mualem (1976):

$$K(S_e) = K_0 S_e^L [1 - (1 - S_e^{1/m})^m]^2, \quad (\text{Eq. 2.})$$

$$S_e(h) = \frac{\theta(h) - \theta_r}{\theta_s - \theta_r}, \quad (\text{Eq. 3.})$$

where  $K$  is the soil hydraulic conductivity ( $\text{cm day}^{-1}$ );  $K_0$  is the hydraulic conductivity acting as a matching point at saturation ( $\text{cm day}^{-1}$ );  $S_e$  is the effective saturation (-) and  $L$  is a shape parameter related to pore tortuosity (-). Further to parameters  $K_0$  and  $L$ , parameters  $\theta_r$ ,  $\theta_s$ ,  $\alpha$ ,  $n$ ,  $m$  of HCC were calculated to provide a fully coupled model that describes the unsaturated hydraulic conductivity in the full matric potential range.

Calculations were executed in R (R Core Team, 2016) with 'eupf' package (Weynants and Tóth, 2014) containing the soil hydraulic prediction methods (EU-PTFs) (Tóth *et al.*, 2015). The 'rgdal' (Bivand *et al.*, 2016) and 'raster' (Hijmans, 2016) R packages were used to call in and perform calculations on raster files. Layers of SoilGrids250m were tiled with 'GSIF' (Hengl, 2016) being able to execute the predictions. Calculations were run in parallel on SoilGrids250m with 'snowfall' (Knaus, 2015) R package.

We compared the performance of the EU-SoilHydroGrids to that of the European Soil Data Centre's soil hydraulic properties (ESDAC SHP) (Tóth and Weynants, 2016) at 1 km scale. The ESDAC SHP were also derived with the EU-PTFs of Tóth *et al.* (2015), but based on the information of the European Soil Database (ESDB) (<http://esdac.jrc.ec.europa.eu/>) and only THS, FC, WP and KS of the topsoil at 1 km resolution were calculated.

For the comparison of EU-SoilHydroGrids and ESDAC SHP, mean THS, FC, WP and KS values have been calculated in EU-SoilHydroGrids 1km based on the first four layers of the dataset. We selected samples with measured THS, FC, WP and KS values from EU-HYDI dataset based on location and we calculated the properties of the top 30 cm using spline interpolation *mpspline* from R package 'GSIF' (Hengl, 2016). We compared these values to the predicted values from EU-SoilHydroGrids and ESDAC SHP. Performance of EU-SoilHydroGrids and ESDB was tested by calculating mean absolute error (MAE) (Eq. 4.) and root mean square error (RMSE) (Eq. 5.) of the calculated soil hydraulic values and variance of the residuals.

$$MAE = \frac{1}{N} \sum_{i=1}^N (y_i - \hat{y}_i) \quad (\text{Eq. 4.})$$

$$RMSE = \sqrt{\frac{1}{N} \sum_{i=1}^N (y_i - \hat{y}_i)^2} = \sqrt{MSE} \quad (\text{Eq. 5.})$$

### 3. Results

Table 2. lists soil hydraulic parameters calculated for the seven soil depths of SoilGrids dataset at 250 m and 1 km resolution. Figure 1. shows map of THS, FC, WP and KS at 15 cm. In those cases where PTF is a regression tree (e.g. Figure 1. KS) there are less variability in the predicted values than in multiple linear regression models. The number after “sl”: 1, 2, 3, 4, 5, 6, 7 indicates depth of the layer: 0, 5, 15, 30, 60, 100 and 200 cm respectively.

Reliability of the calculated soil hydraulic maps depends both on the reliability of soil properties estimated in the SoilGrids database and reliability of the PTFs. Accuracy of SoilGrids 250m is between 0.54 and 0.83 in terms of  $R^2$  (Hengl *et al.*, 2017). Reliability of the PTFs used to calculate soil hydraulic layers of the EU-SoilHydroGrids ver1.0 were calculated on the test sets of EU-HYDI dataset (Tóth *et al.*, 2015) and shown in Table 3.

#### 3.1. Comparison of EU-SoilHydroGrids and soil hydraulic properties available from ESDAC

We evaluated the performance of EU-SoilHydroGrids ver1.0 and ESDAC SHP to reproduce the measured soil hydraulic properties of EU-HYDI on more than 1500 samples (Table 4.). In EU-SoilHydroGrids dataset all four soil hydraulic properties had smaller MAE and RMSE values (Table 4.) and the variance of the residuals was significantly less than in ESDAC SHP. Performance of soil hydraulic predictions improved up to 21% based on RMSE and MAE values compared to ESDAC SHP.

The improvement of EU-SoilHydroGrids ver 1.0 compared to ESDAC SHP arises from the fact that with SoilGrids we could apply more accurate PTFs because the range of soil properties available for the predictions is wider and more detailed. For example, instead of soil texture, particle size distribution could be used. Also, SoilGrids has a determined resolution, while ESDAC is based on polygons of varying size and complexity of soil typology that are simplified to their dominant soil in ESDAC SHP. Further advantages of the EU-SoilHydroGrids are that it provides soil hydraulic properties at seven soil depths up to 2 m, that parameters of MRC and HCC are included as well and that it provides information both at 1 km and 250 m resolution.

Among the soil hydraulic properties, THS had the smallest relative estimation error. After THS, WP and FC had the second and third smallest prediction error. Prediction of KS was the most uncertain. The performance of the predictions depends also on the uncertainty of soil properties in SoilGrids dataset. That analysis is beyond the scope of this paper.

#### **4. Outline of the range of applications that the data may have in hydrology**

EU-SoilHydroGrids ver1.0 provides soil hydrological data with full continental coverage, which enables hydrological, ecological, atmospheric, agricultural or other environmental modelling at continental and regional scale. Both water content at typical matric potentials and parameters describing the whole soil water retention curve are available from the EU-SoilHydroGrids ver1.0 dataset. Further to information on soil water retention, soil hydraulic conductivity in saturated and unsaturated conditions is also provided. If an updated version of SoilGrids becomes available or more efficient PTFs are derived in the future, EU-SoilHydroGrids ver1.0 can be updated as well.

When soil hydraulic layers of EU-SoilHydroGrids ver1.0 is utilized for further applications the followings are worth considering:

- if only and exactly THS and/or FC and/or WP and/or KS is needed from the EU-SoilHydroGrids dataset it is recommended to use THS, FC, WP, KS layers, because they were derived directly with point estimations having lower uncertainty, than calculating those from MRC or HCC (Tóth et al., 2015).
- in EU-SoilHydroGrids soil hydraulic data of layers deeper than the bottom of the soil is included as well, which provides possibility to interpolate soil hydraulic properties through different soil depths, therefore depth to bedrock has to be considered from other sources e.g. [www.soilgrids.org](http://www.soilgrids.org);
- soil hydraulic properties are calculated for the fine earth fraction (< 2 mm), volume of coarse fragments is not considered in the calculations;
- if local soil hydraulic data or local soil hydraulic PTFs and/or local soil information are available their use is recommended because spatial accuracy of EU-SoilHydroGrids is limited, especially
  - above 1000 m sea level and
  - in pedoclimatic regions which were not covered in the EU-HYDI dataset;
- prediction of soil hydraulic conductivity has higher uncertainty than other soil hydraulic properties, conceivably due to the fact that KS is highly influenced by the geometry of the pore space, which is a lacking information in continental scale datasets.



## **5. Format and availability of EU-SoilHydroGrids ver1.0**

Gridded multilayered EU-SoilHydroGrids ver1.0 is available in TIFF format. Maps for whole Europe or selected regions can be downloaded freely for non-commercial use from Institute for Soil Sciences and Agricultural Chemistry Centre for Agricultural Research Hungarian Academy of Sciences ([http://mta-taki.hu/en/eu\\_soilhydrogrids\\_3d](http://mta-taki.hu/en/eu_soilhydrogrids_3d)) and European Soil Data Centre (<http://esdac.jrc.ec.europa.eu/>).

## **Acknowledgement**

This database is part of a project that has received funding from the European Union's Horizon 2020 research and innovation programme under grant agreement N°635750. The database management is supported by the Hungarian National Scientific Research Foundation (OTKA) under Grant K105167. The voluntary contribution of the European soil physicians and their institutions to EU-HYDI database provided the basis of EU-SoilHydroGrids. We sincerely thank all for their efforts in collecting samples, measuring soil properties and processing the data. Without their collaboration in EU-HYDI it would not have been possible to calculate the soil hydraulic layers. We would like to thank Gábor Szatmári, Judit Matus and Annamária Laborczi ISSAC CAR HAS for their assistance in the control of the dataset and download site construction. We are grateful to the anonymous reviewers for constructive comments on this paper.

## References

- Bivand, R., Keitt, T., Rowlingson, B. (2016). rgdal: Bindings for the Geospatial Data Abstraction Library. R package version 1.1-10. Available at: <https://cran.r-project.org/package=rgdal>
- Hengl T., Mendes de Jesus J., Heuvelink G.B.M., Ruiperez Gonzalez M., Kilibarda M., Blagotić A., Wei S., Wright M.N., Geng X., Bauer-Marschallinger B., et al. (2017). SoilGrids250m: global gridded soil information based on Machine Learning. PLoS ONE in press
- Hengl, T. (2016). GSIF: Global Soil Information Facilities. R package version 0.5-3. Available at: <https://cran.r-project.org/package=GSIF>
- Hijmans, R.J. (2016). raster: Geographic Data Analysis and Modeling. R package version 2.5-8. Available at: <https://cran.r-project.org/package=raster>
- Knaus, J. (2015). snowfall: Easier cluster computing (based on snow). R package version 1.84-6.1. Available at: <https://cran.r-project.org/package=snowfall>
- Mitchell T, GDAL Developers. (2014). Geospatial power tools: GDAL Raster and Vector Commands (G Sherman, ed.). Locate Press: Chugiak, AK.
- Mualem, Y. (1976). A new model for predicting the hydraulic conductivity of unsaturated porous media. Water Resources Research 12. 513–522
- R Core Team. (2016). R: A language and environment for statistical computing. R Foundation for Statistical Computing Available at: <https://www.R-project.org/>
- Shangguan W., Hengl T., Mendes de Jesus J., Yuan H., Dai Y. 2017. Mapping the global depth to bedrock for land surface modeling. Journal of Advances in Modeling Earth Systems DOI: 10.1002/2016MS000686
- Soil Survey Staff. (1975). Soil taxonomy: a basic system of soil classification for making and interpreting soil surveys. US Department of Agriculture, Soil Conservation Service. U.S.

Government Printing Office: Washington, DC.

Tóth, B., Weynants, M., Nemes, A., Makó, A., Bilas, G., Tóth, G. (2015). New generation of hydraulic pedotransfer functions for Europe. *European Journal of Soil Science* 66. 226–

238 DOI: 10.1111/ejss.12192

Tóth, G., Weynants, M. (2016). ‘Maps of indicators of soil hydraulic properties for Europe’,

dataset/maps downloaded from the European Soil Data Centre Available at:

[esdac.jrc.ec.europa.eu](http://esdac.jrc.ec.europa.eu) [Accessed 15 September 2016]

van Genuchten, M.T. (1980). A closed-form equation for predicting the hydraulic conductivity of unsaturated soils. *Soil Science Society of America Journal* 44: 892–898

Weynants, M., Montanarella, L., Tóth, G., Arnoldussen, A., Anaya Romero, M., Bilas, G.,

Borresen, T., Cornelis, W., Daroussin, J., Gonçalves, M.D.C., et al. (2013). European

HYdropedological Data Inventory (EU-HYDI). EUR – Scientific and Technical

Research series – ISSN 1831-9424, Luxembourg. DOI: 10.2788/5936

Weynants, M., Tóth, B. (2014). The euptf package. The European Soil Portal.: 5 Available at:

<http://eussoils.jrc.ec.europa.eu/> [Accessed 18 July 2016]

Accepted Article

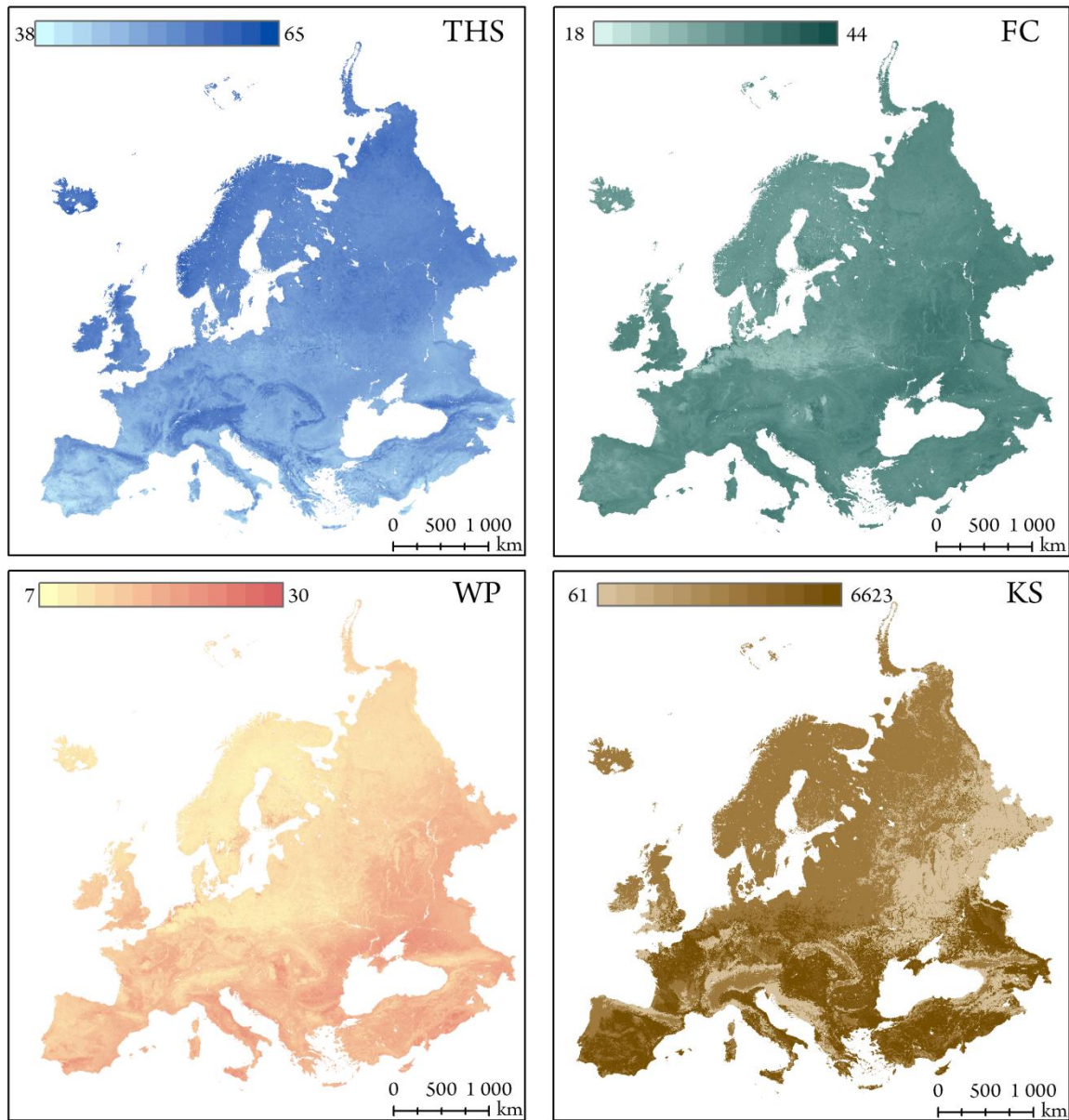


Figure 1. Map of saturated water content ( $\text{cm}^3 \text{cm}^{-3} \times 100$ ) (THS), field capacity ( $\text{cm}^3 \text{cm}^{-3} \times 100$ ) (FC), wilting point ( $\text{cm}^3 \text{cm}^{-3} \times 100$ ) (WP) and saturated hydraulic conductivity ( $\text{cm day}^{-1} \times 100$ ) (KS) at 15 cm depth in EU-SoilHydroGrids ver1.0 .

Accepted

Table 1. The list of soil hydraulic properties calculated in EU-SoilHydroGrids and PTFs used for calculations (Tóth et al., 2015) indicating input information from SoilGrids.\*

Calculated soil hydraulic property	PTF used for calculation	Type of model	Soil information of SoilGrids used as input for calculations
THS	PTF06	LR	Silt, Clay, T/S, BD, pH
FC	PTF09	LR	Silt, Clay, OC
WP	PTF12	LR	Silt, Clay, OC
KS	PTF16	RT	Sand, Silt, Clay, T/S, OC
MRC	PTF22	$\theta_r$ with RT, $\theta_s$ , $\alpha$ and $n$ with LR	Sand, Silt, Clay, T/S, OC, BD, pH
MRC + HCC	PTF19	MS	Sand, Silt, Clay, T/S, OC

\* Abbreviations used in table: THS: saturated water content, FC: water content at field capacity, WP: water content at wilting point, KS: saturated hydraulic conductivity, MRC: moisture retention curve, HCC: hydraulic conductivity curve, LR: multiple linear regression, RT: regression tree, MS: mean statistics of pre-determined groups, Sand: sand content, Silt: silt content, Clay: clay content, T/S: topsoil and subsoil distinction, BD: bulk density, pH: pH in water, OC: organic carbon content.

Table 2. Format of calculated soil hydraulic properties in the EU-SoilHydroGrids ver1.0 .

Soil hydraulic property	Unit	Name in dataset	
		250 m resolution	1 km resolution
THS $\times 100$	$\text{cm}^3 \text{cm}^{-3}$	THS	THS
FC $\times 100$	$\text{cm}^3 \text{cm}^{-3}$	FC	FC
WP $\times 100$	$\text{cm}^3 \text{cm}^{-3}$	WP	WP
KS $\times 100$	$\text{cm day}^{-1}$	KS	KS
parameters of MRC:			
$\theta_r \times 10000$	$\text{cm}^3 \text{cm}^{-3}$	band1 of MRC	MRC_thr
$\theta_s \times 10000$	$\text{cm}^3 \text{cm}^{-3}$	band2 of MRC	MRC_ths
$\alpha \times 10000$	$\text{cm}^{-1}$	band3 of MRC	MRC_alp
$n \times 10000$	-	band4 of MRC	MRC_n
$m \times 10000$	-	band5 of MRC	MRC_m
parameters of MRC+HCC:			
$\theta_r \times 10000$	$\text{cm}^3 \text{cm}^{-3}$	band1 of HCC	HCC_thr
$\theta_s \times 10000$	$\text{cm}^3 \text{cm}^{-3}$	band2 of HCC	HCC_ths
$\alpha \times 10000$	$\text{cm}^{-1}$	band3 of HCC	HCC_alp
$n \times 10000$	-	band4 of HCC	HCC_n
$m \times 10000$	-	band5 of HCC	HCC_m
$K_0 \times 10000$	$\text{cm day}^{-1}$	band6 of HCC	HCC_K0
$L \times 10000$	-	band7 of HCC	HCC_L

Table 3. Performance of PTFs tested on EU-HYDI test sets (adapted from Tóth et al. (2015)).

Predicted soil hydraulic property	Number of samples used to derive PTF	Number of samples in test set	RMSE on test set
THS [ $\text{cm}^3 \text{cm}^{-3}$ ]	1142	156	0.020
FC [ $\text{cm}^3 \text{cm}^{-3}$ ]	2356	1005	0.055
WP [ $\text{cm}^3 \text{cm}^{-3}$ ]	5530	2357	0.048
$\log_{10}\text{KS}$ [ $\log_{10}(\text{cm day}^{-1})$ ]	2628	1121	1.06
MRC ( $\theta$ ) [ $\text{cm}^3 \text{cm}^{-3}$ ]	1713	288	0.046
HCC ( $\log_{10}\text{K}$ ) [ $\log_{10}(\text{cm day}^{-1})$ ]	860	176	0.77

Accepted Article

Table 4. Performance of EU-SoilHydroGrids ver1.0 and ESDAC SHP analysed on measured soil hydraulic values of EU-HYDI samples that have information on location.

<b>Predicted soil hydraulic property</b>	<b>Name of soil hydraulic map</b>	<b>PTF used for calculation*</b>	<b>Number of samples</b>	<b>MAE</b>	<b>RMSE</b>
THS of top 30 cm [cm <sup>3</sup> cm <sup>-3</sup> ]	EU-SoilHydroGrids ver1.0	PTF06	1607	0.076	0.095
	ESDAC SHP	PTF02	1607	0.081	0.109
FC of top 30 cm [cm <sup>3</sup> cm <sup>-3</sup> ]	EU-SoilHydroGrids ver1.0	PTF09	1548	0.074	0.096
	ESDAC SHP	PTF07	1548	0.085	0.110
WP of top 30 cm [cm <sup>3</sup> cm <sup>-3</sup> ]	EU-SoilHydroGrids ver1.0	PTF12	2652	0.066	0.084
	ESDAC SHP	PTF10	2652	0.085	0.106
KS of top 30 cm [log <sub>10</sub> (cm day <sup>-1</sup> )]	EU-SoilHydroGrids ver1.0	PTF16	1743	1.097	1.40
	ESDAC SHP	PTF14	1743	1.234	1.59

\*Description of PTFs used for the calculations can be found in Tóth et al. (2015).

Accepted Article